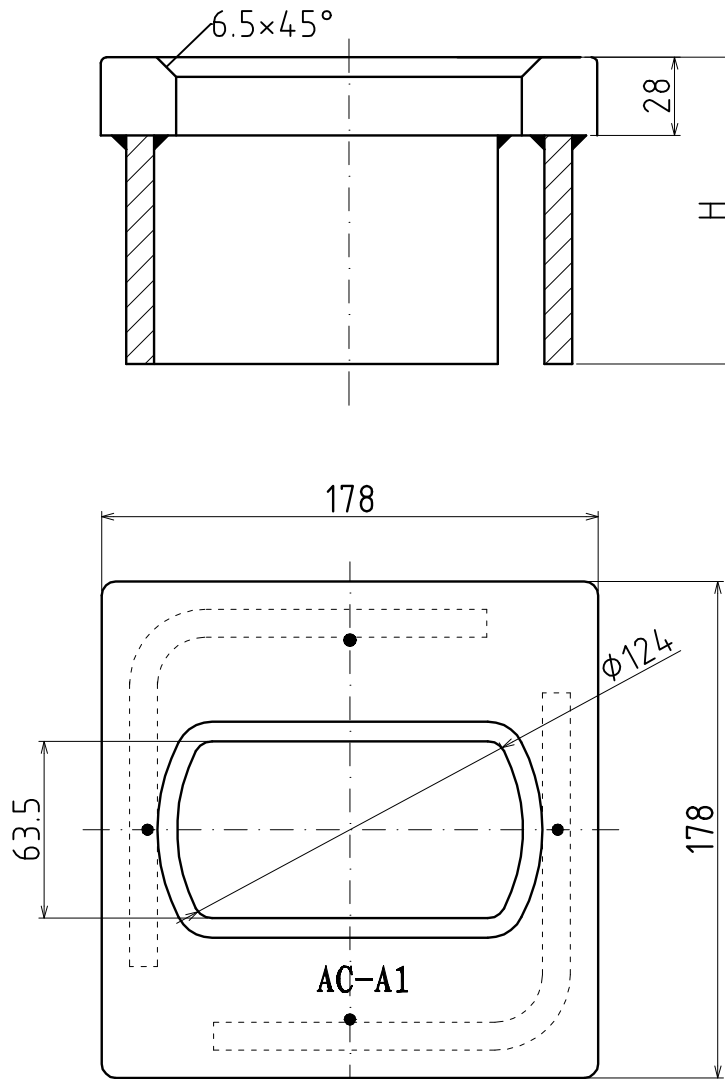


Raised ISO Foundations

TYPE:AC-A1



| Type | H | Weight |
|-----------|-----|--------|
| AC-A1/110 | 110 | 9.3Kg |
| AC-A1/135 | 135 | 10.2Kg |
| AC-A1/150 | 150 | |

Material: Ship building steel

Finish: Paint

Weight: Table

M.B.L:Tension: 500KN

M.B.L:Shear: 420KN

M.B.L:Compression: -

General Lashing System(China)Co.,Ltd.

[Http://www.GeneralLashing.com](http://www.GeneralLashing.com)