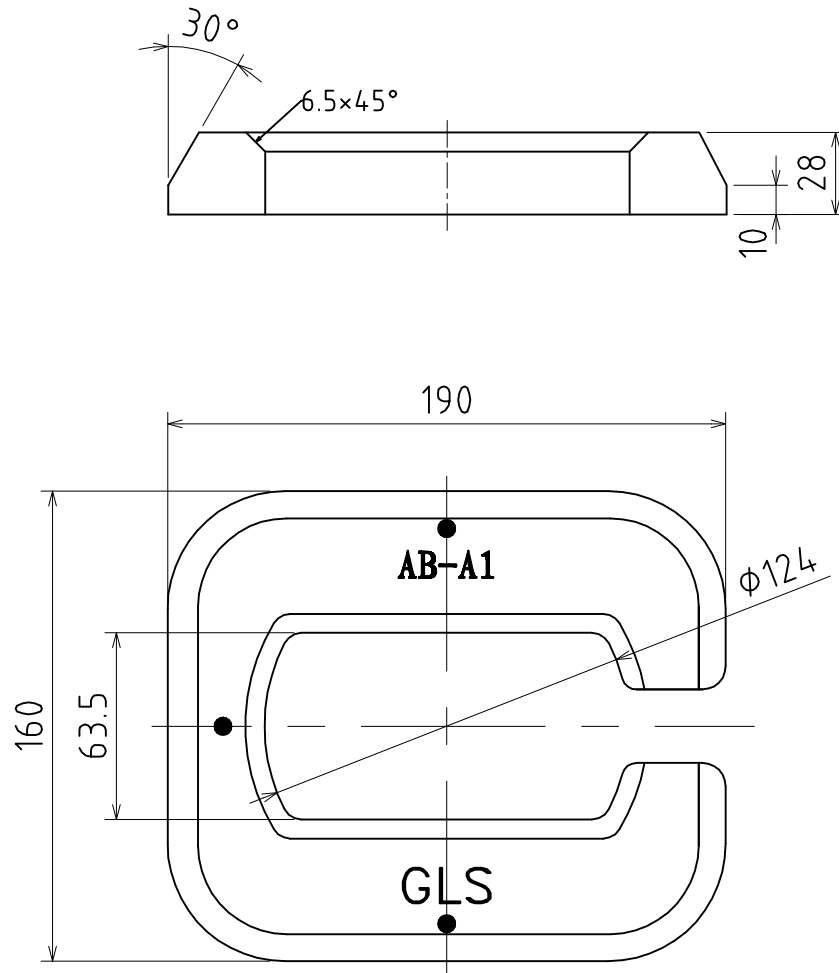


Raised Stowage Plates

TYPE:AB-A1



Material: Ship building steel

Finish: Paint

Weight: 3.2KG

M.B.L:Tension: -

M.B.L:Shear: 420KN

M.B.L:Compression: -

General Lashing System(China)Co.,Ltd.

[Http://www.GeneralLashing.com](http://www.GeneralLashing.com)